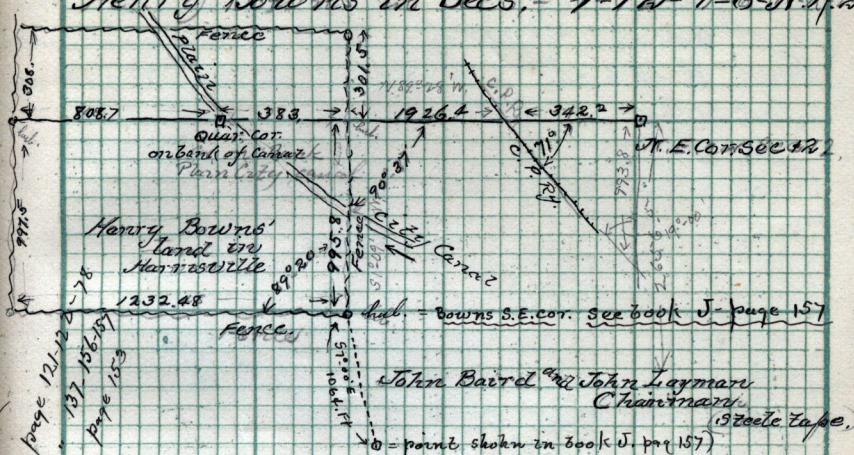


June 22 - 1891. Survey made for
Henry Bowns in Sec's. 1-12-T-6-N.R.2W.



Deed from Samuel White to P.G. Taylor. March 21 - 1876.
 N. 58. - Part of N.E. 1/4 Sec. 12, T-6-N.R.2-W. Beg. 34.80
 ch. N. from N.E. cor. of said 1/4 Sec. S 7 1/2° E. 11.38 chs.
 N. 19.21 chs. in mid. st. N 15.89 chs, E 19.20 chs to beg. 30.33
 Wm. A. Taylor to P.G. Taylor. March 18 - 1873. - H. 525.
 P.S. N 1/4 Sec. 1, T-6-N.R.2-W. Beg. 40 chs S of N.E. cor. said 1/4 S. - N. 12.12
 chs. N. 4.30 chs. S 89° 45' E. 12.77 chs. S. 4.11 chs to beg. 5.09 chs.

Scale: RICHMOND C. T. of Chains per inch.

- ✓ N^o 3. Centre State Stand 1st South St. N.E. 79.5
 cor. of Str. S.E. 74.41 Balsm tree East of cor. S.W. 67.5 Balsm
 tree on cor. N.W. 64.4 poplar tree on cor.
- ✓ N^o 9. Cent Co. Road and, South line City Entry
 S.E. 65.32 pole. S.W. 137.1 - to fence cor.
- ✓ N^o 7. Centre Co. Road + N. line City Entry.
 S.E. 131.2 pole. N.E. 98.65 tal. pole.
- ✓ N^o 16. centre Co. Road & field Str. running West
 in N. End of City N.E. 53.9 pole. N.W. 58.4 Balsm tree. S.W. 66.5
 Fence post. S.E. 41.45 Bx Eld tree.